

# About Impaired Driving - Level 2 Staff Activity Guide



## What's Included:

The purpose of this guide is to support teachers in empowering students to make positive choices even when faced with high-risk situations. In this guide you will find: a Student Video Viewing Guide, Student Activity Guide, and a Brain Quiz with an Answer Guide. Each of these resources can be used independently or in conjunction with one another as time allows. For your planning purposes, please find the estimated time needed for each activity.

## Viewing the Video:

Without Student Video Viewing Guide - (4 minutes)  
With Student Video Viewing Guide - (5-7 minutes)

## Student Activities:

Activity #1 Write About It - (10-15 minutes)  
Activity #2 Group Activity - (10-15 minutes)  
Activity #3 Extended Learning Activity - (30 minutes)

## Brain Quiz:

(5-10 minutes)

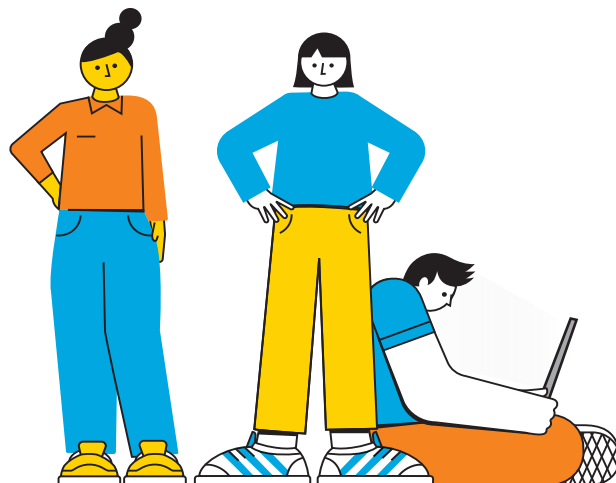
## Student Video Viewing Guide Strategies:

### Before the video (3-5 minutes)

- Ask students to “pair and share” with a classmate, and/or have a brief class discussion:
  - Is impaired driving a problem among teenagers?
  - Why or why not?
- Ask students to “pair and share” with a classmate what they think:
  - What are the reasons that people continue to drive impaired despite the risk?
  - What are strategies for minimizing this behavior?

### During the video (3-5 minutes)

- Pause the video at times for Checks for Understanding (CFU). You can call out a few students to answer, and/or have them pair and share.



For more information and resources on this topic, please visit [BrainAbouts.Org](https://www.brainabouts.org).

BrainAbouts® is powered by the John Fontaine Jr. Charity



# About Impaired Driving - Level 2

## Staff Activity Guide

### Brain Quiz Answer Key: (5-10 minutes)

1. Alcohol-related car crashes are the \_\_\_\_\_ leading cause of death in teens. (Answer: D. 1st)
2. 1 out of every \_\_\_\_\_ intoxicated driver crashes involves a teen driver. (Answer: C. 4)
3. True or False: Someone dies in a drunk driving car crash every 50 minutes. (Answer: True)
4. When a teen uses marijuana, the teen is \_\_\_\_\_ times (more or less) likely to get into a car accident. (Answer: A. 2-3 times more)
5. The \_\_\_\_\_ a teen is when they start to use any substance, the \_\_\_\_\_ the risk of addiction. (Answer: D. younger, greater)



### Student Activity Options:

#### Activity #1 Write About It (5-10 minutes)

- a. Materials needed: notebook or paper, writing utensil, and student guide.
- b. Directions: have students write about it: Substance-abuse related car crashes are the leading cause of death for teens.
  - Is this surprising?
  - What are ways to keep yourself safe?
  - What are your values and absolutes regarding drinking and drugged driving?
- c. Criteria for success: students are able to identify 1-2 ways to keep themselves safe, and 1-2 values they have regarding impaired driving.

#### Activity #2 Group Lesson Activity (10-15 minutes)

- a. Materials needed: scratch paper and writing utensils.
- b. Directions: divide the class into groups of 3-5 students. Tell the class: Pretend that you are at a party and a friend who has been drinking asks you to ride in the car with them to a different party. What do you do? Have the students brainstorm and record several options and be prepared to share 2-3 responses with the class.
- c. Criteria for success: each group is able to identify how to respond appropriately and identify 2-3 responses they could use when with a peer.

#### Activity #3 Extended Learning Activity (30 minutes)

- a. Materials needed: scratch paper and writing utensils for planning, space to divide up class and act.
- b. Directions: divide the class into groups of 3-5 students and have each group create an infomercial that discusses the dangers of drinking and drugged driving, especially for teens. Have each group share their infomercial with the class.
- c. Criteria for success: each group is able to act out the dangers of impaired driving that includes 3-5 facts.